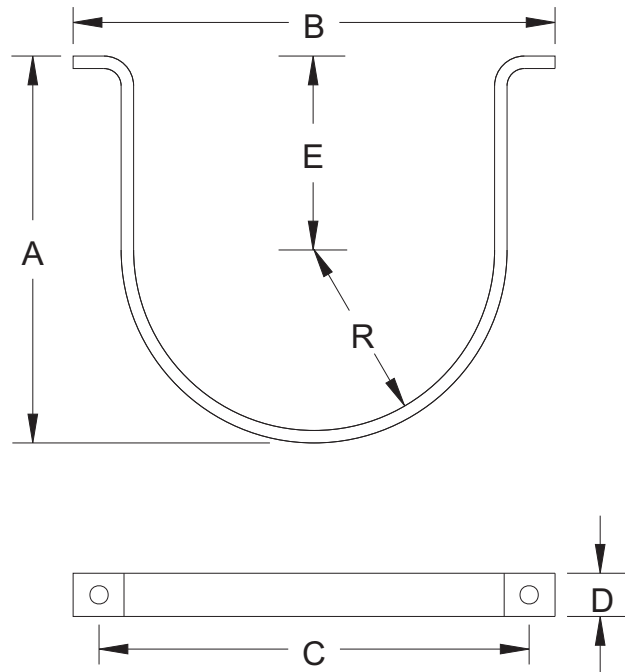


CO₂ Component Description

Cylinder Strap

Effective: November 2016
K-81-1230 Rev AC

PART NUMBER	CYLINDER SIZE	A		B		C		D		E		R	
		in	mm	in	mm	in	mm	in	mm	in	mm	in	mm
WK-270014-000	25, 35, & 50	7.94	202	11.5	292	10.4	264	1.00	25.4	3.5	88.9	4.25	108
81-626690-000	75	8.63	143	12.3	312	11.1	282	1.25	31.8	3.75	95.2	4.63	118
WK-270157-000	100	10.0	254	14.0	356	12.4	315	1.75	44.4	4.5	114	5.31	135



MATERIAL: STEEL

All trademarks are the property of their respective owners.

This literature is provided for informational purposes only. Kidde-Fenwal, Inc. assumes no responsibility for the product's suitability for a particular application. The product must be properly applied to work correctly. The technical data contained herein is limited strictly for informational purposes only. Kidde-Fenwal, Inc. believes this data to be accurate, but it is published and presented without any guarantee or warranty whatsoever. If you need more information on this product, or if you have a particular problem or question, contact Kidde-Fenwal, Inc.

©2016 Kidde-Fenwal, Inc.

EXPORT INFORMATION (USA)
Jurisdiction: EAR
Classification: EAR99
This document contains technical data subject to the EAR.

Kidde Fire Systems
400 Main Street
Ashland, MA 01721 USA
Ph: 508.881.2000
Fax: 508.881.8920
www.kiddefiresystems.com